

Logo Here

Job # XXXXXX
Cust # XXXX-XC

LN6619 - Banner Pen - Solid Colours: Black, White, Yellow OR Transparent Colours: Black, White, Light Yellow, Dark Yellow, Orange, Red, Pink, Purple, Dark Green, Light Green, Dark Blue, Light Blue

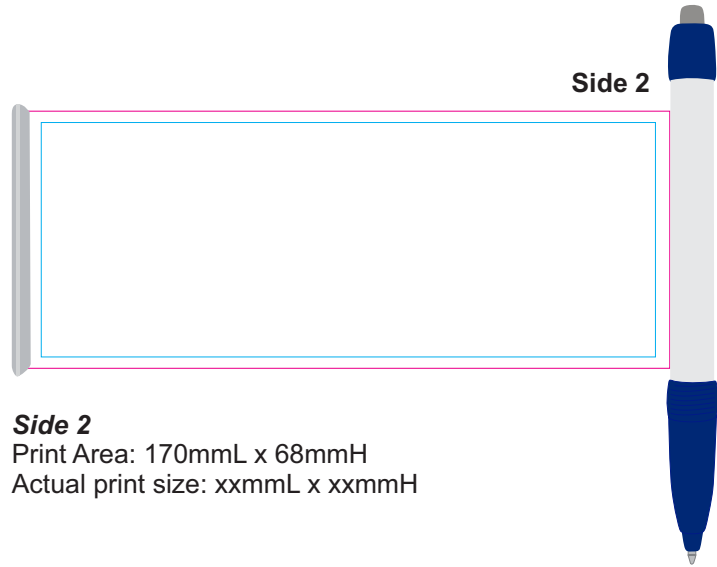
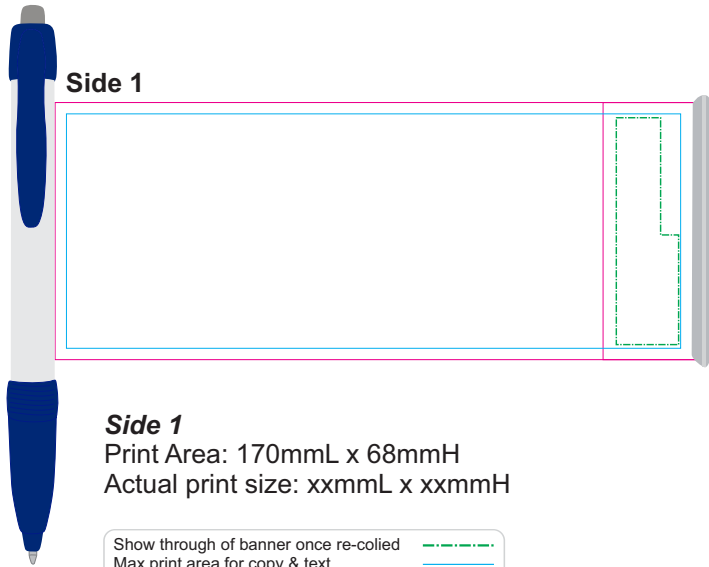
Digital Offset 

IMPORTANT




Banner pens are laminated one side and not the other which can affect colours. 10% plus or minus of pantone colour is considered acceptable.

-  **Black Ink Refill**
-  **Blue Ink Refill**

Below at 50% of actual size



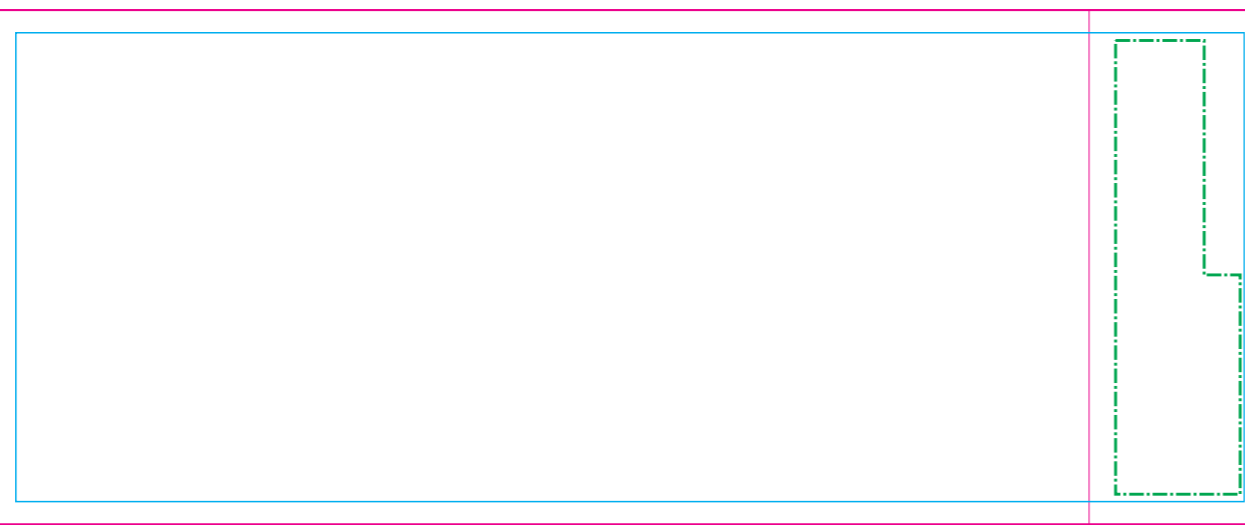
Transparent Dark Blue

 Show through of banner once re-coiled
 Max print area for copy & text
 Finished print area



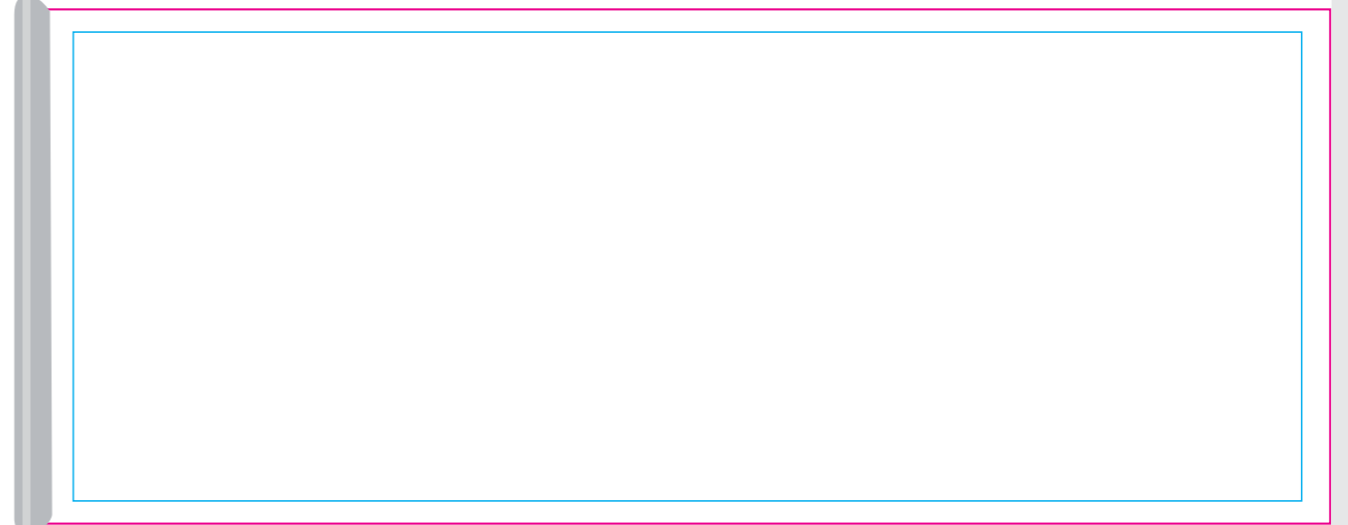
Transparent Dark Blue

Side 1






Side 1
Print Area: 170mmL x 68mmH
Actual print size: xxmmL x xxmmH

Side 2



Side 2
Print Area: 170mmL x 68mmH
Actual print size: xxmmL x xxmmH

Show through of banner once re-rolled 
Max print area for copy & text 
Finished print area 

Solid Black



Solid White



Solid Yellow



Transparent Black



Transparent White



Transparent Light Yellow



Transparent Dark Yellow



Transparent Orange



Transparent Red



Transparent Pink



Transparent Purple



Transparent Dark Green



Transparent Light Green



Transparent Dark Blue



Transparent Light Blue

